

# Imagine's conference center

Located at the intersection of Rue du Cherche-Midi and Boulevard du Montparnasse, the *Imagine* Institute's conference center is ideally suited as a venue for numerous international scientific colloquia as well as other events.

The center offers **800 square meters** of meeting and conference space (not including terraces), divided into various areas that may be used independently, allowing for the organization of events for all audiences and purposes.



## ◀ An auditorium

This 183-seat facility (including 5 dedicated spaces for persons with disabilities) was conceived to meet the needs of presenters and attendees: high-quality overhead projector and video monitor, optimal acoustics, availability of a control room, IT and electrical equipment facilitating the use of individual computers, functional and comfortable seating, light dimming systems, blackout blinds, etc.

## A multi-purpose area

This area can be divided to hold two meetings at the same time (with seating for a maximum of 30 people in each half) or used as a single space to host a reception for up to 100 people.



## A press room

This area was designed in particular to hold press breakfasts or conferences bringing together around fifteen people at most. It provides direct access to the adjacent terrace, which offers spectacular views of François Morellet's monumental neon sculpture.

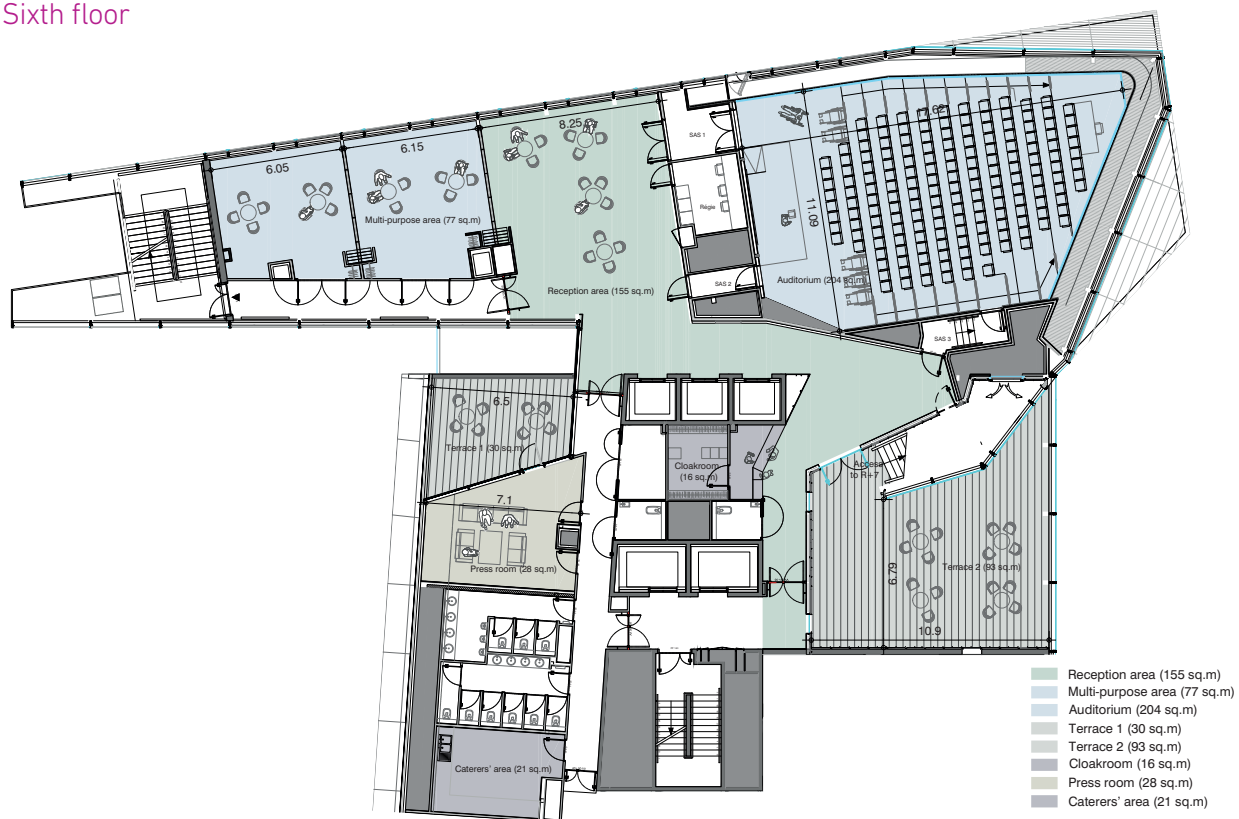
**A lounge area and cafeteria** on the seventh floor, with a unique view of Paris, may be rented for special events independently of the other spaces.



◀ **Direct and exclusive access to the terraces** on the sixth and seventh floors, including the ability to circulate between the floors outside, is provided from the conference center.

The price schedule for the rental of the various spaces within the conference center is available by request. For any further information, please contact [events@institutimagine.org](mailto:events@institutimagine.org)

## Sixth floor



## Seventh floor

